

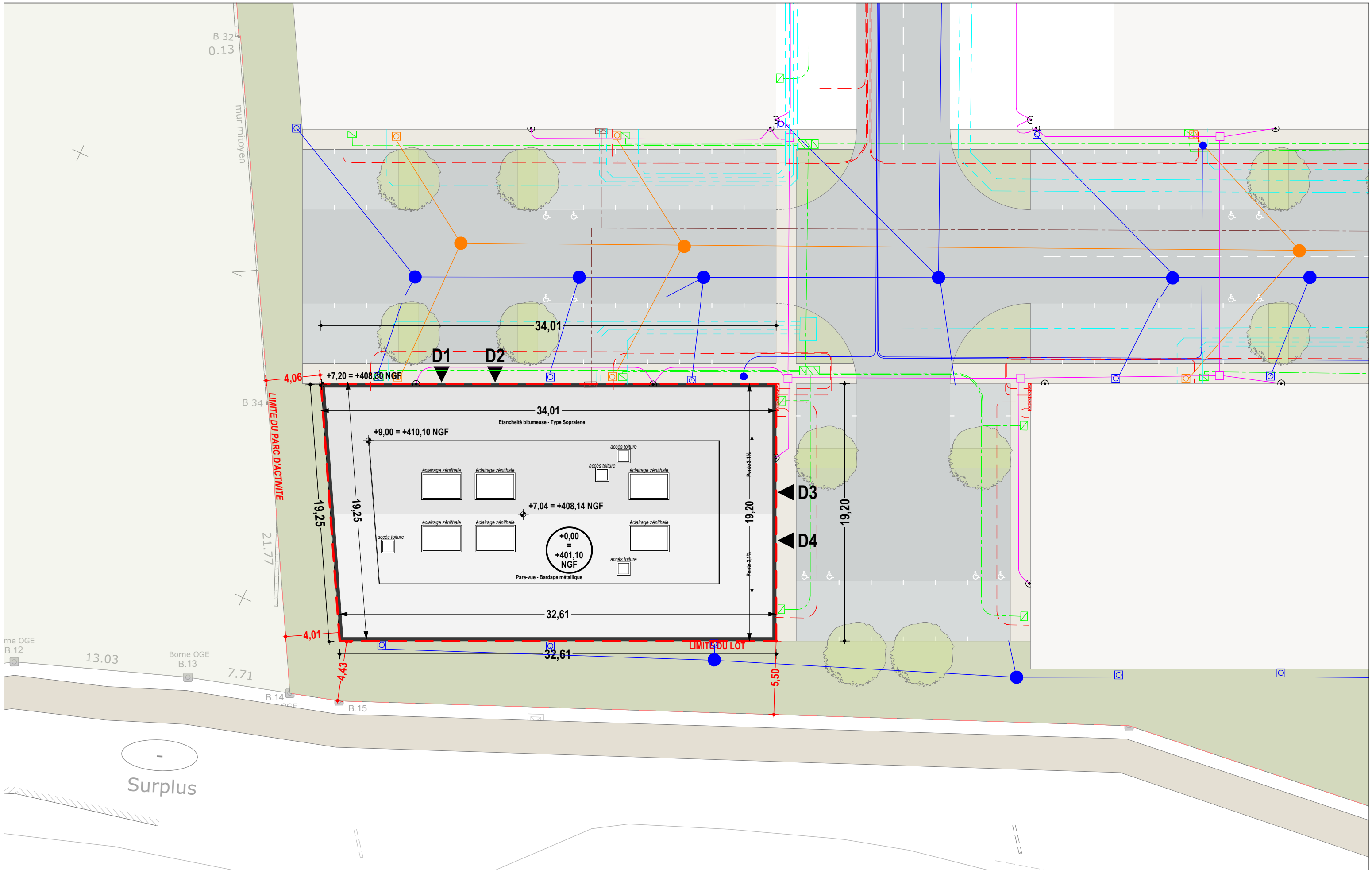


			
OPÉRATION	PARC DU VIADUC - BAT D 15, 17, 19 rue de Paris 69170 - TARARE		
PHASE	COMMERCIALISATION		
N°	PLANS DE COMMERCIALISATION		
INDICE	DATE 01/09/21 ÉCH	PHASE PC AP	DOSSIER N° 12297.03
MAÎTRE D'OUVRAGE	SCCV TARARE D 6bis rue Joannes Carret 69009 LYON		
INTERVENANTS	B.E.T.V.R.D. : PRO-ING - Tél : 04 78 57 37 21 - Mail : fdhenin@pro-ing.fr		
<p> LYON - " L'ARCHIPEL" - 411 allée des Noisetiers - CS 61710 - 69773 - Limonest Cedex MONTPELLIER - 2 rue du Fer à Cheval - 34430 - Saint-Jean-de-Vedas PARIS - 37-39 avenue Ledru Rollin - 75012 - Paris Tél : 04.78.66.48.48 - Fax : 04.78.66.48.66 - archigroup@archigroup.fr www.archigroup.fr </p> <p> Denys LEGER - Jean-Philippe CHARON - Frank DREIDEMIE - Michel SANIAL Hervé DACLIN - Gabriel DUSSUYER - Thibaut FLAVIGNY - Stéphane LACOSTE </p>			
			



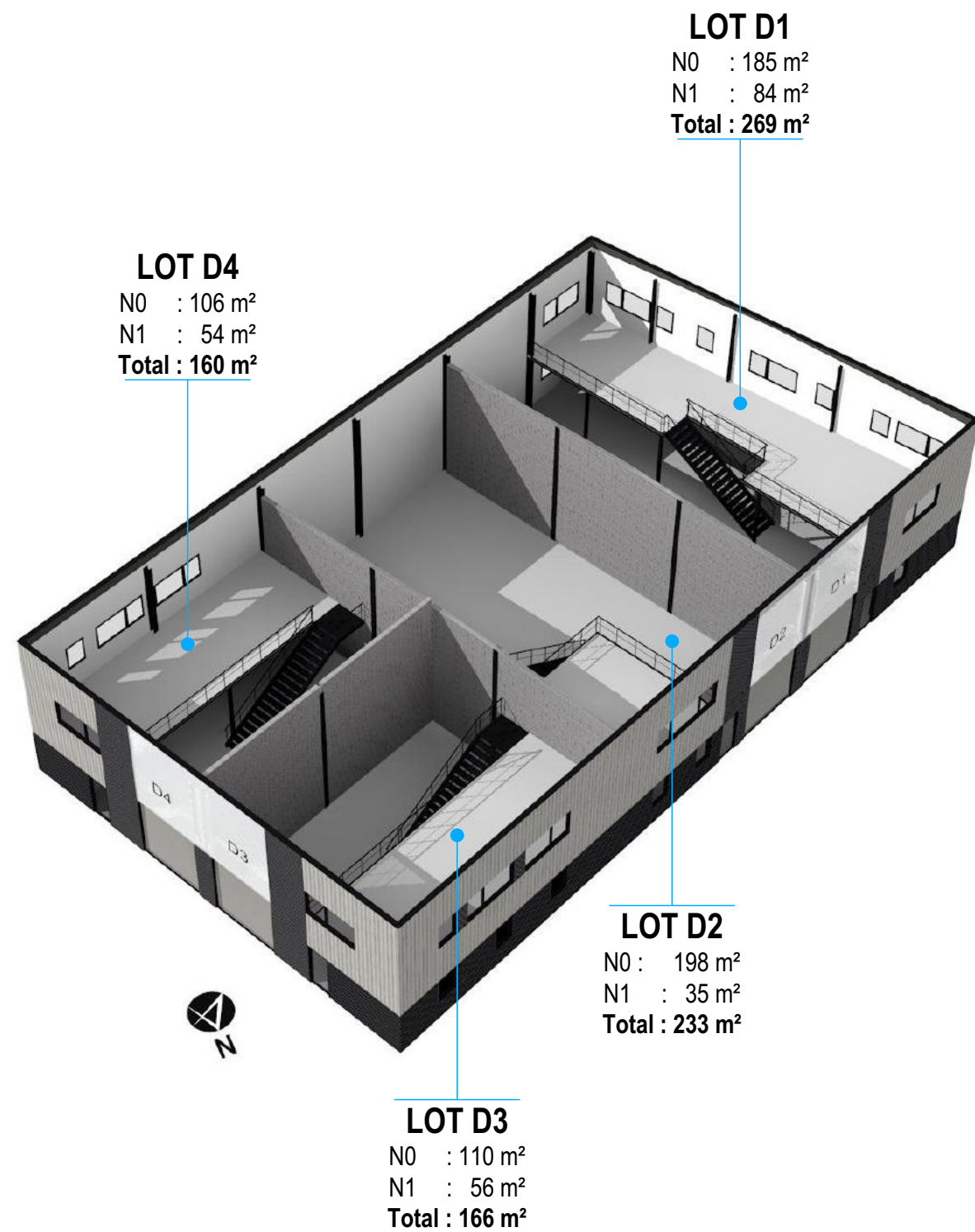
DATE 01/09/21 | ÉCH 1:250 | PLANS DE COMMERCIALISATION
 PARC DU VIADUC - TARARE - 69170

12297.03

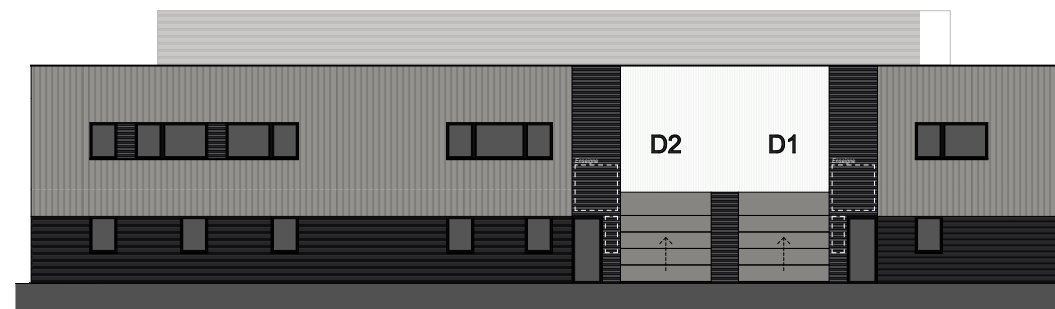
PLAN DE MASSE

1/3

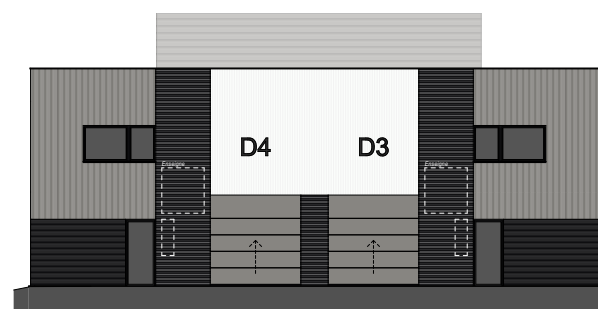




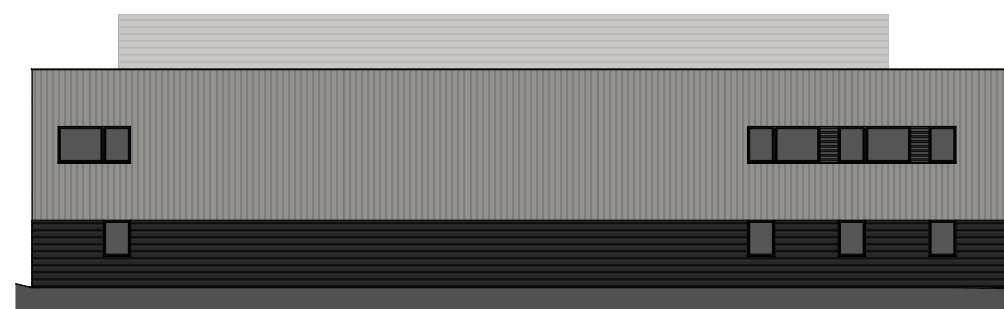
NIVEAU 00	599 m ²
NIVEAU 01	229 m ²
TOTAL	828 m ²



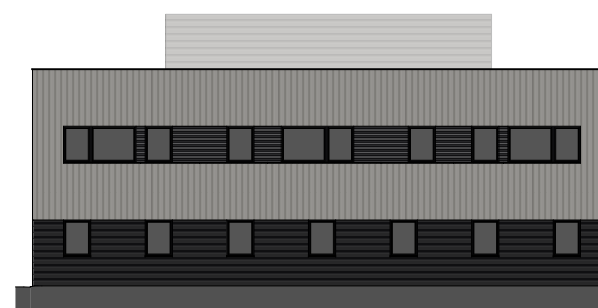
FACADE NORD



FACADE EST



FACADE SUD



FACADE OUEST



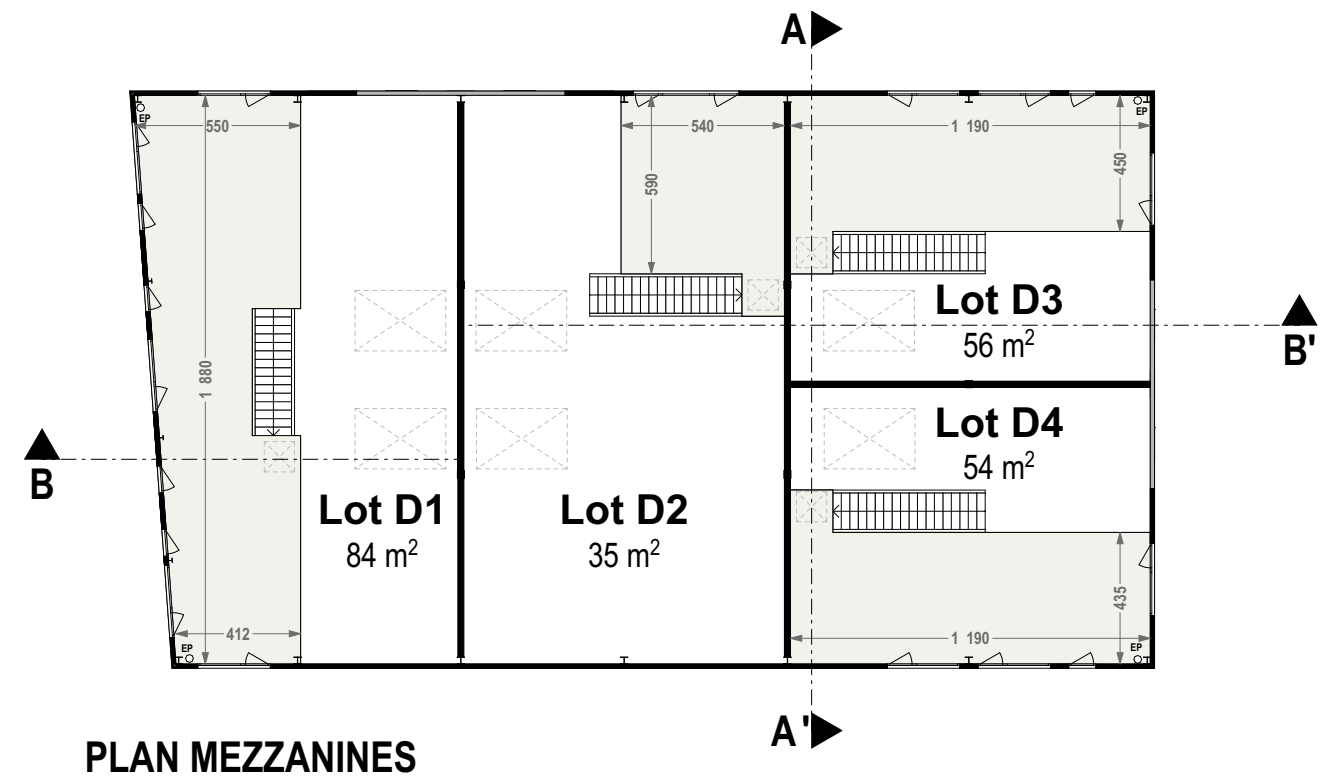
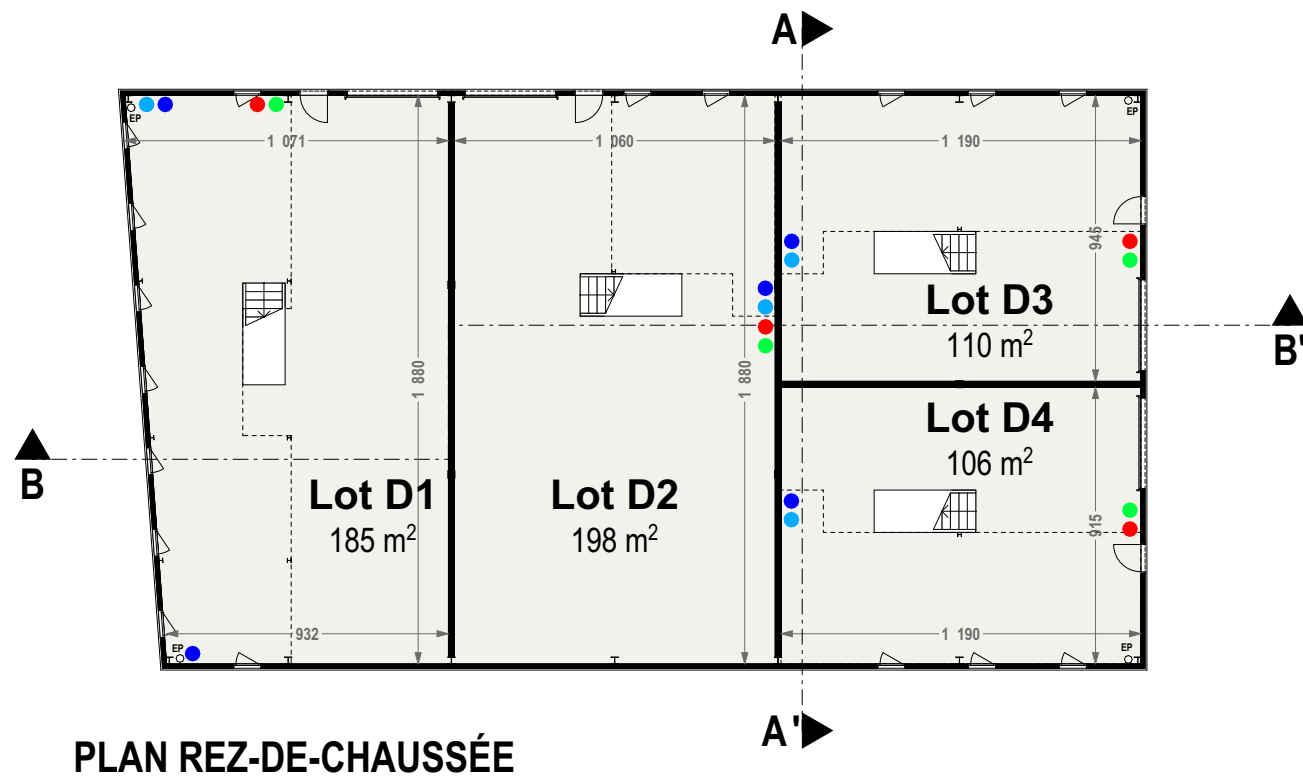
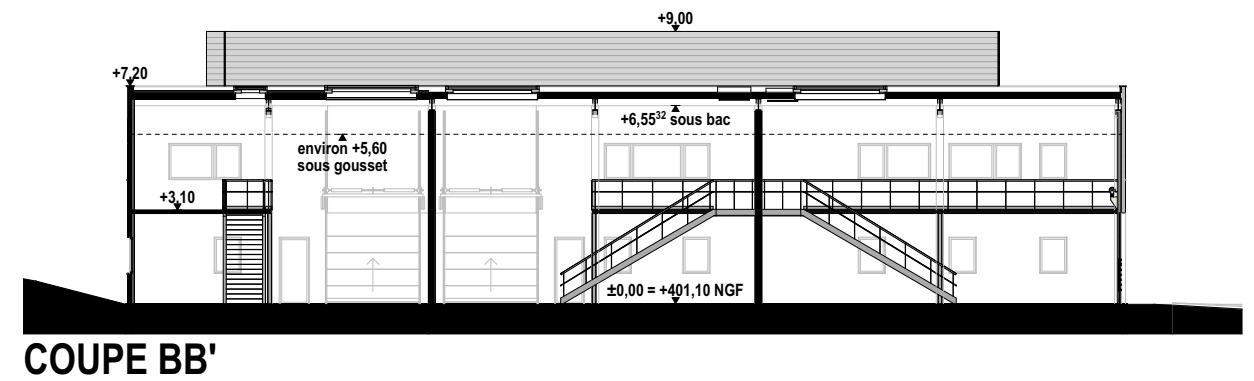
DATE 01/09/21 | ÉCH 1:250 | PLANS DE COMMERCIALISATION
 PARC DU VIADUC - TARARE - 69170

12297.03

REPERAGE LOTS / FACADES

2/3





- ARRIVEE ELEC
- ARRIVEE EAU POTABLE
- ATTENTE EU/EV Ø100
- ARRIVEE TELECOM



NOTA : Les surfaces indiquées correspondent aux surfaces de plancher (PC), hors éventuel doublage.

DATE 01/09/21 | ÉCH 1:250 | PLANS DE COMMERCIALISATION
PARC DU VIADUC - TARARE - 69170

12297.03

PLANS DES NIVEAUX / COUPES

3/3

